



HONKA MARKKI House Collection



STEP INTO THE URBAN HONKA MARKKI

Markki is a modern log house inspired by traditional Ostrobothnian housebuilding. This gives the house a simple, streamlined and angular look. The design takes into account modern, air-tight construction.

Clear lines are a key feature of the collection's layouts. At the heart of the design are shared, cabin-like spaces where the whole family can relax and spend time together. The collection provides flexible solutions to suit modern needs. In addition, the basic layout can be upgraded with bay-windowed spaces, balconies and porches.



Honka Markki transforms to suit the needs of those living in it.

Thanks to two innovations by Honkarakenne—the non-settling Honka Fusion log and the Honka Zero Corner solution—the Honka Markki log house has an architecture that fits in

well with many different environments, from urban city landscapes with small plots and tight zoning requirements to locations close to nature.

PROPERTY SPECIFICATIONS

A two-storey small city house with two entrances, a terrace and a balcony. The side building has a car shelter, storage space, guestroom, sauna and terrace.

Net floor area: 168 m² (6 rm + kitchen + full bath) + 22 m² (1 rm + sauna)

Heating: district heating.

Heat distribution within the house: water-based underfloor heating.

Frame material: non-settling log 204 × 260 mm.

Surface material of outer walls: Honkarakenne non-settling log FXL 204.

Windows: Piklas

Outside doors: Kaksipuu and Profin

Architectural design: Oopeaa SAFA (the Finnish Association of Architects) Anssi Lassila

Head designer: SAFA (the Finnish Association of Architects) Anssi Lassila

Interior designer: OMAdesign/Anna Tuohimaa

HVAC and electrical design: LVI-insinööritoimisto Jorma Niemonen OY

Structural design: Honkarakenne Plc/Matti Yli-Sissala

Landscaping: VSU Maisema-Arkkitehdit Oy/MARK Tommi Heinonen

DESIGNER OF HONKA MARKKI: ANSSI LASSILA

The Honka Markki collection was designed by Architect Anssi Lassila of the Finnish Association of Architects from the architectural office OOEPA. Anssi Lassila is known for wood architecture design. His designs include the Kärämäki shingle church built in 2004 and the Puukukka wooden apartment buildings in the Kuokkala area of Jyväskylä. It was therefore natural for Honkarakenne to invite him to design the new collection of houses.

Although the Honka Markki exhibition house is located on a block of houses with designs

that honour the Ostrobothnian tradition, it was important for the design to take into account universal, clean solutions of small house construction. As a material, logs make it possible to create architecture suitable for cities, with its continuous lines and clear joints. Massive wood structures also provide a better indoor climate and an authentic atmosphere.

The basic solutions take into account flexibility. This is enabled by the clear frame, which can be modified according to the life situations of those living in the home.



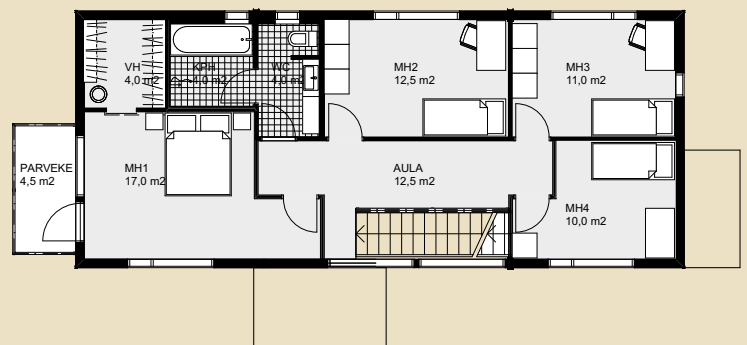
“We do not copy from traditions, we refine them into something new.”

BLUEPRINT

1st FLOOR



2nd FLOOR



NESTLED IN A PINE FOREST

The side building houses a garage and storage space, as well as a sauna and guestroom. For the family who commissioned it, the solution made the dream of an outdoor sauna a reality.

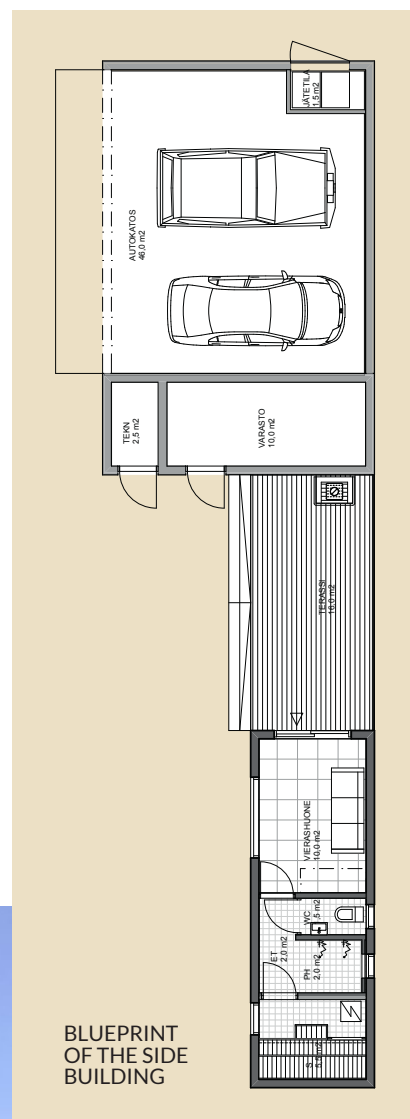
The look of the buildings is unified, and they are joined by larch terraces.

The terraces of the main house and side building frame the sheltered yard, which is landscaped to fit in with the surrounding forest. When built in a dense, urban environment, the structure enables

peace and quiet even while being close to neighbours. The yard is divided practically for different activities, taking into account the needs of the whole family.

What is Markki?

THE FINNISH WORD "MARKKI" IS A LOAN FROM SWEDISH REFERRING TO AN AREA OF LAND. IN THE SOUTH OSTROBOTHNIAN DIALECT, "MARKKI" REFERS TO ONE'S OWN COURTYARD.



BLUEPRINT
OF THE SIDE
BUILDING





MODERN LOG ARCHITECTURE

Logs are a natural material that shrink as they dry, resulting in the settling of log houses. The Honka Fusion non-settling massive wood frame developed by Honkarakenne is an innovation that, as its name suggests, will not shrink or settle. This makes it possible to create a modern building style and to

combine massive wood with other materials, such as stone, steel or glass.

Together with the Honka Fusion logs, the Honka Zero Corner solution makes it possible to build log houses even when facade regulations prohibit the construction of traditional log

houses with cross-corners because they do not fit in with the surrounding landscape.

Thanks to the Honka Zero Corner solution, genuine and healthy log houses can be built with outer walls that look panelled. This creates a house with clean lines.

Modern log construction offers the possibility to create a home with a modern atmosphere and style.

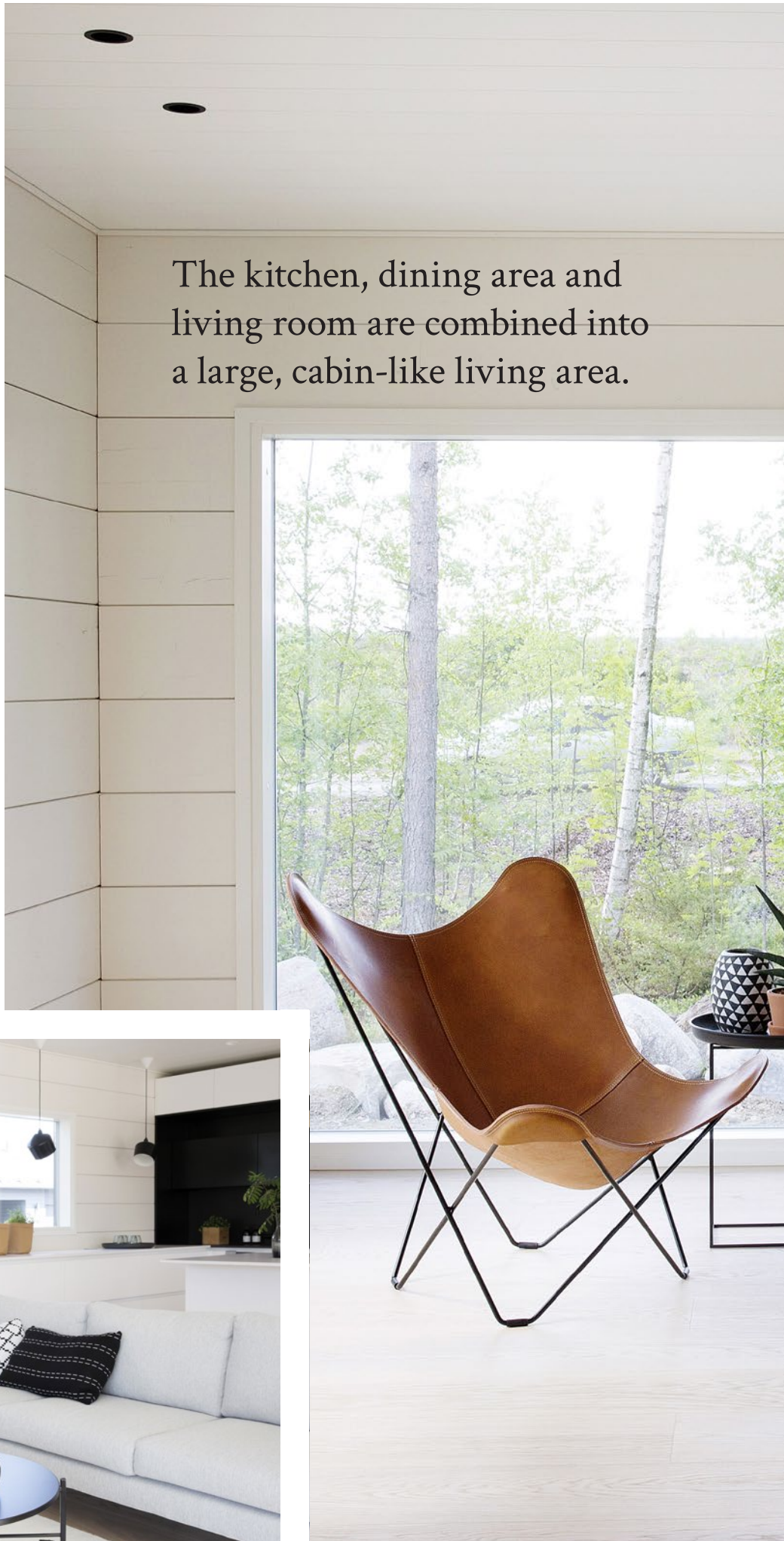
Honka Markki
on display at the
Seinäjoki housing
fair, property
no. 19.

LIVING ROOM

Downstairs, the large windows flood the space with natural light, while the surrounding landscape brings its colours inside. For this reason, the chosen colour palette is natural and simple.

The log walls are treated with matte white wood wax, letting just a hint of the wood grain show through. The floor is wide oak plank parquet, which intertwines beautifully with the shades of the walls. Contrast is added to the decor using black accents, such as in the metal components of the Linnatuli convection fireplace and in small furnishings.

The kitchen, dining area and living room are combined into a large, cabin-like living area.







DINING AREA AND KITCHEN

The natural colours of wood are allowed to shine in the dining area, connecting it beautifully with the landscape outside the window. Unlike the other parts of the house, the bay window is dark grey on the inside as well, creating a lovely contrast with the wood.

The black facade enables the bold use of black inside the house, too. The white Lube kitchen opens up into the living room, and is paired with a black counter area which seems to hide the sink. The white countertops are by Silestone, while the black ones are Dekton.



STAIRS

The Grado stairs catch your attention as soon as you step inside. The post-supported hand-rail solution, which continues all the way to the upstairs, adds a finishing touch to the decor. The steel railing also continues into the upstairs gallery. The steps are light oak.

In Honka Fusion homes, the massive wood is allowed to show through, highlighting the positive effects of the wood on the indoor climate.





UPSTAIRS GALLERY

The upstairs is designed to be a somewhat more intimate space than the downstairs, but the open gallery still draws the home dwellers together from their bedrooms. The upstairs living area can also be used as a bedroom if necessary.

The interior walls are drywall, which creates a light look while also highlighting the modern character of the log house.

In addition to black and white, the decor also makes use of various shades of grey.

"A simple, harmonious interior colour scheme puts the house in the spotlight."

Interior designer Anna Tuohimaa/
OMAdesign

BEDROOM

The upstairs master bedroom opens out onto a beautiful lake landscape. When the landscape changes with the seasons, the colour scheme and atmosphere inside change along with it. The decor does not suffer, however, thanks to the clear colour palette.

The black walls soften the atmosphere and create ideal conditions for sleeping.

The master bedroom has access to the balcony, which has a light structure allowing natural light to pass through.

Logs are a cosy material that can be transformed to suit modern needs.





GUESTROOM

Wood is an excellent material for bedrooms, as it is proven to have a relaxing, calming effect. This effect is doubled when the decor has a harmonious colour scheme.

Markki's clear space solutions can be transformed to suit individual needs and make it easy to change the purpose of rooms.



WHY CHOOSE HONKA MARKKI?

- Urban architecture that is at home in a city environment as well as surrounded by nature.
- Honka Markki suits the needs of different kinds of families. The size range of the collection is 110–185 m².

- The house has a non-settling log frame that breathes naturally. This enables easy management of humidity and temperature, and also provides a blank slate for architecture: the log frame can be combined with other materials to suit your individual tastes within the framework of the building plans.

- The Markki collection employs the innovative Honka Zero Corner technology, in which the logs are connected to one another with salmon-tail joints inside the structure. The ends of the logs are protected from the weather, and wide corner panelling is not needed.

- Honka Fusion massive wood houses make durable, fire-safe, airtight and humidity-safe homes.

- Erecting the frame is quick and easy, as you do not need to anticipate settling or install special fasteners.

- In Honka Fusion houses, the seam between logs is tighter than normal. This gives the house a modern look. The logs,



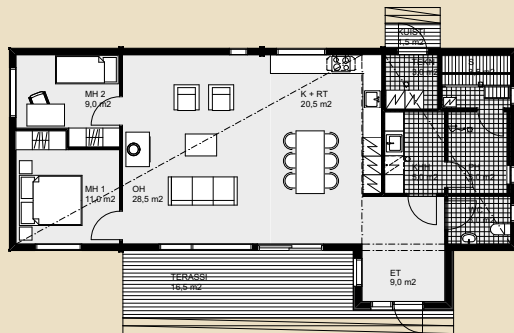
which join together closely on the inside, create an aesthetically pleasing inner corner without grooves or sharp, dark shadows.

- The wooden components of Honkarakenne houses are manufactured in our own factories in Karstula, Central Finland. Our production process is refined to be as ecological as possible. The energy consumption of industrial manufacturing of massive wood is only around 50% of that required for cement and around 20% of that needed for bricks. We use our wooden raw material with precision and minimal waste. The small amount of waste created is used as a raw material for heat energy production.

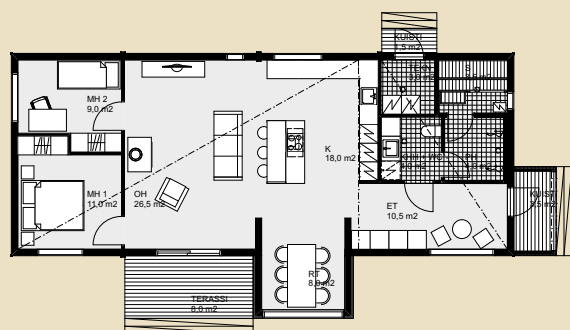
- Honka homes do not have plastic vapour barrier sheets in the walls. This allows the walls to breathe naturally, letting water vapour move freely from the air into the walls and back.

Thanks to the Smart Ventilation System™ solution developed by Honka, even massive wood walls insulated with wood fibre insulation can be created safely and breathably without plastic vapour barrier sheets.

- The production of laminated logs employs glue, which preserves the natural breathability of the wood. The glue does not release smells or harmful substances into the interior air. The glue seams are invisible to the eye and are breathable, meaning they allow water vapour to pass through. This means they do not create an airtight plastic coating on the wood structure.
- A well-designed, carefully built Honka massive wood home lasts hundreds of years. When your home is designed taking flexibility and versatility into account, the useful life of the home is increased despite changing life situations.

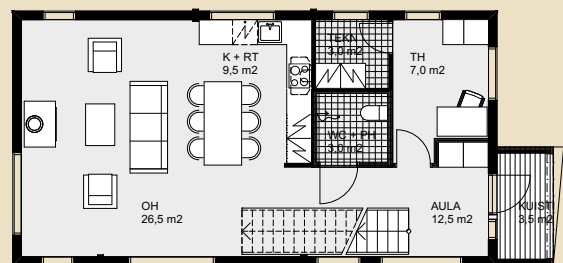


MARKKI 110 1A
 Floor area: 110.5 m² Porches and balconies: 18 m²
 Net floor area: 100.5 m² Doc id: 25338

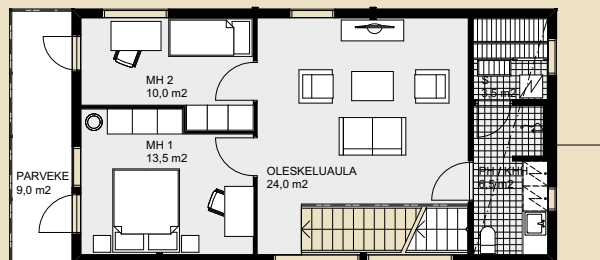


MARKKI 110 2A
 Floor area: 110 m² Porches and terraces: 13 m²
 Net floor area: 99.5 m² Doc id: 25533

1st FLOOR

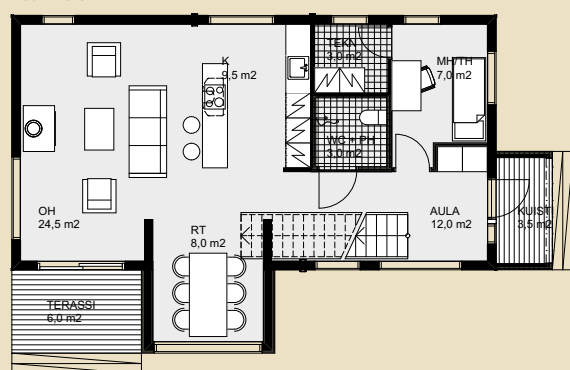


2nd FLOOR

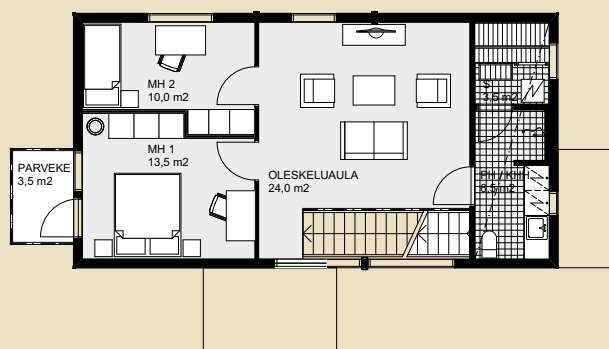


MARKKI 140 1A
 Floor area: 137 m² Porches and balconies: 31 m²
 Net floor area: 123 m² Doc id: 25546

1st FLOOR

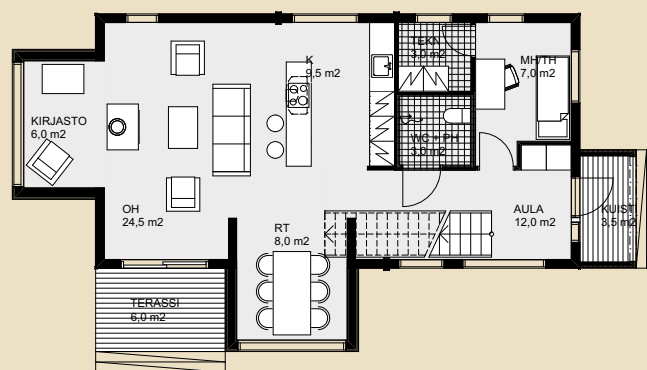


2nd FLOOR

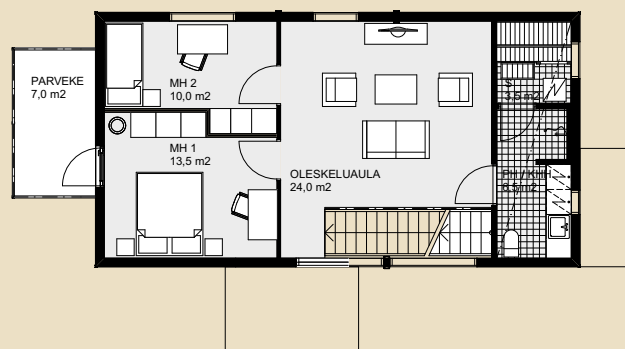


MARKKI 140 2A
 Floor area: 143 m² Porches and balconies: 13 m²
 Net floor area: 128 m² Doc id: 25581

1st FLOOR



2nd FLOOR



MARKKI 140 3A
 Floor area: 150.5 m² Porches and balconies: 16.5 m²
 Net floor area: 134 m² Doc id: 25585

